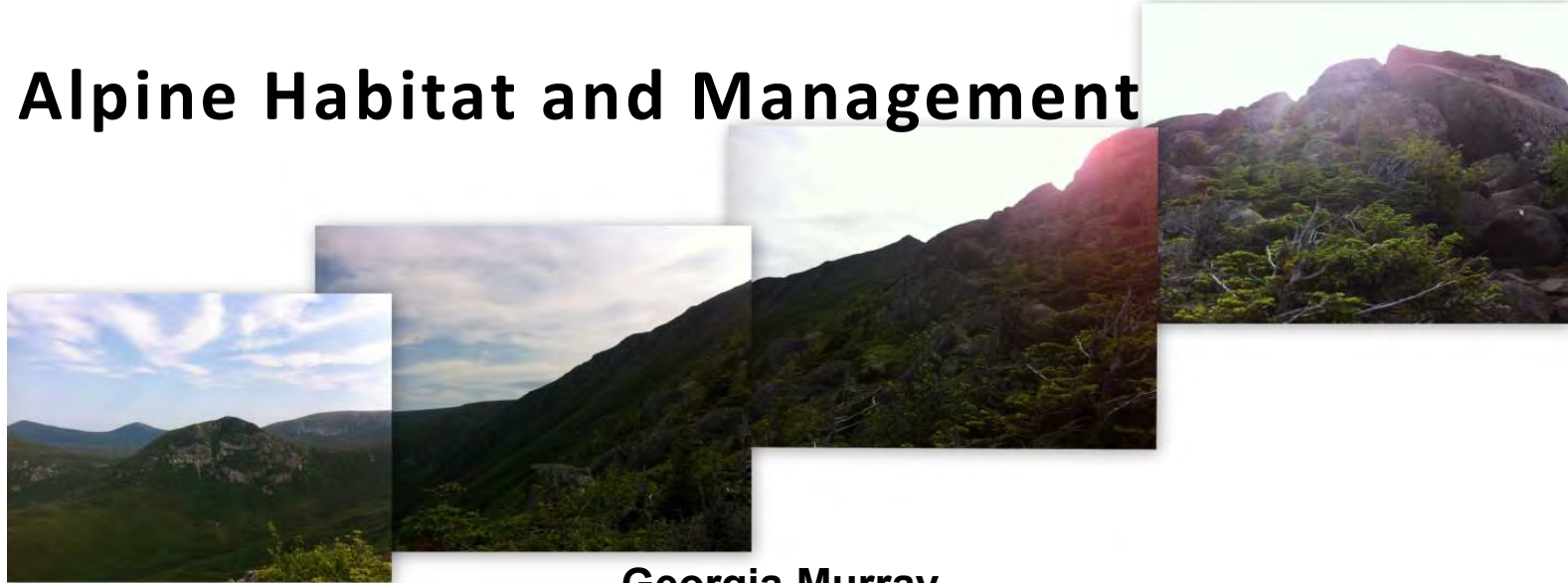


Alpine Habitat and Management



Georgia Murray

Northeast Alpine Habitat Climate Risk & Resilience

Glen Mittelhauser

Monitoring Plants on Alpine "Islands"

Cas Carroll

Using Paleobiological Data to Identify Refugia

Brian Roth

**Alpine Habitat and Management in a Changing Climate: A Case Study from
the High Mountains Region of Nepal**

Alpine Habitat and Management

- Long-term monitoring data:
 - Use what we have & expand baseline data for existing conditions
 - Look beyond temperature to physical factors & nutrient deposition
- Leverage long temporal perspectives (paleo), and low elevation sites
- Population dynamics of alpine plants
 - Dispersal, regeneration, connection across ridges
- Communicate & advocate for policy changes
 - Trainings for managers & researchers to move us along the continuum from facts to understanding to empathy to action
 - Partnerships with educators, naturalists, and summit stewards